



The Cabin

Pentland house, The bank, St.

Mary's

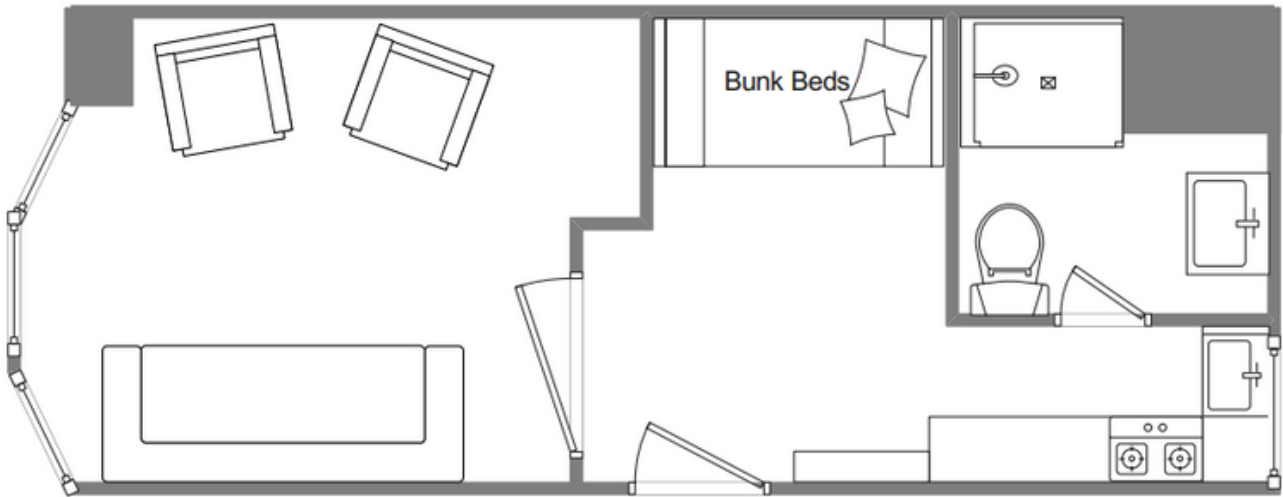


Sleeps 2 | Friday Change over

- Bunk Beds
- Town centre location
- Convenient for beaches
- Pets allowed
- Internet access
- Ideal for the solo traveller

The Cabin is a compact and cleverly designed ground floor bijou residence located in the heart of Hugh Town in Pentland House, next to the historic Mermaid Inn. Sleeping two guests in bunk beds, the interior is quirky and full of character, making maximum use of the available space. The layout comprises a cosy lounge with a feature bay window, a bunk bedroom area complete with reading lights for both bunks, a compact kitchen with stunning views of the busy harbour and a shower room. The Cabin is a popular choice for two friends to share or for the single traveller and their dog. It's position at the hub of Island activities means you really feel a part of island life

Layout



Getting to the property

Map of St Marys



Directions from the Quay | Walking time: 2-3 minutes

Head towards the entrance to the quay
Turn left at The Mermaid Inn on to Hugh Street
Keep to the left side of the road

Pentland House is the first building
Enter the main door to Pentland House
The Cabin is situated on the right

What3words: inhales.blemishes.freely

Scilly Self Catering
Lower Strand
Isles of Scilly, TR21 0PS

Enquiries@scillyselfcatering.com
01720 422082
www.scillyselfcatering.com