



The Cabin

The Bank, St. Mary's

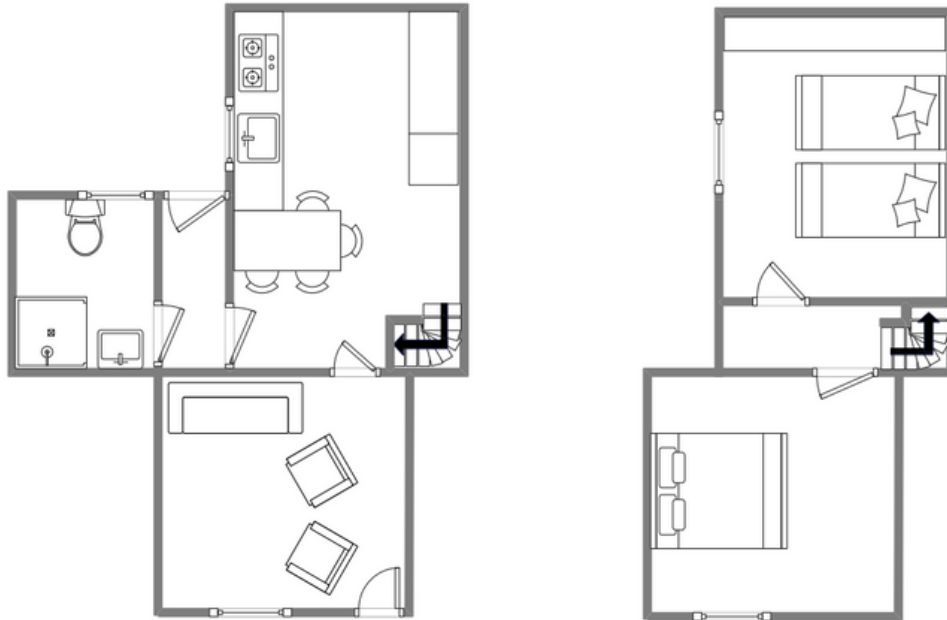


Sleeps 4 | Thursday Change over

- Double or twin arrangements
- Children welcome
- Laundry Facilities
- Close to beaches
- Internet access
- Central town location

The Cabin is a picturesque traditional Scillonian cottage that oozes charm and character. It was also one of the first cottages built in Hugh Town and is extremely popular with visitors returning to stay there year after year. One double and one twin room provide sleeping accommodation for up to four guests on the first floor, while the ground floor comprises a cosy lounge leading to a well-appointed and fully equipped breakfast kitchen, and a shower room. There are also two small sun trap terraces to the rear. The cottage is set in the heart of Hugh Town, on Hugh Street itself, with shops, pubs and restaurants practically on the doorstep, and the quay is also just a few steps away.

Layout



Getting to the property

Map of St Marys



Directions from the Quay | Walking time: 2-3 minutes

Head towards the entrance to the quay
Turn left at The Mermaid Inn on to Hugh Street
Carry on to the Atlantic Slipway

You will see a row of traditional cottages
The Cabin is second from the your right
Enter from Hugh Street

What3words:brink. appetite. atomic

Scilly Self Catering
Lower Strand
Isles of Scilly, TR21 0PS

Enquiries@scillyselfcatering.com
01720 422082
www.scillyselfcatering.com