



Seaview moorings - Royal suite

The Strand, St.Mary's

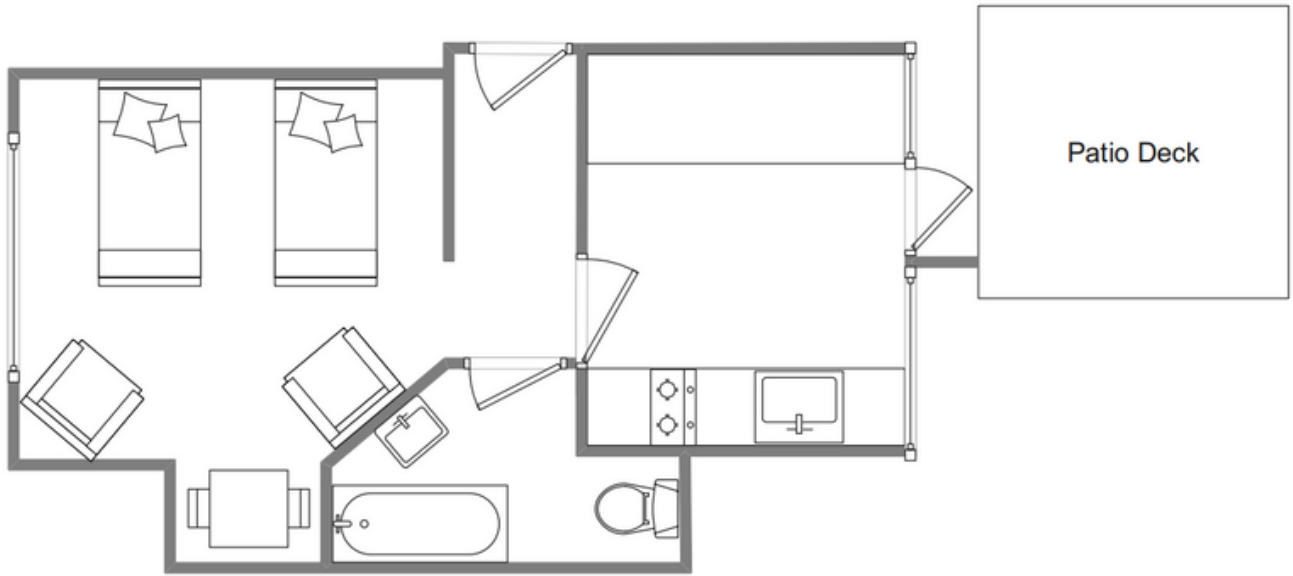


Sleeps 2 | Friday Change over

- Twin arrangement
- Outstanding sea view
- Outside patio
- Close to beaches
- Internet access
- Central town location

The Royal Suite is a second floor studio apartment and is perfectly situated fronting Town Beach and boasting spectacular uninterrupted views across the harbour to Tresco, Bryher and Samson. It is also less than a five-minute walk to Hugh Town and has the additional benefit of a south facing balcony deck with sun loungers, table and chairs. The Royal Suite has a bed-sitting area with a high quality easy operational pull down twin beds, giving the benefit of additional living space during the day. There is also a Television, DVD player, Wi-Fi and access to Netflix. Leading off the bed-sitting area is a galley kitchen - fully fitted to a high specification, comprising a fridge, freezer, oven, two ring hob and microwave. A door from the kitchen leads outside onto the balcony deck.

Layout



Getting to the property

Map of St Marys



Directions from the Quay | Walking time: 7-9 minutes

Head towards the entrance to the quay
Turn left at The Mermaid Inn on to Hugh Street Keep to the left side of the road
Carry on all the way past Holgates Green

Stop about 40 yards after the boat park
Seaview Moorings is on your right Go through the main entrance The Royal Suite is on the second floor

What3words:///coaching.daydreams.riverbank

Scilly Self Catering
Lower Strand
Isles of Scilly, TR21 OPS

Enquiries@scillyselfcatering.com
01720 422082
www.scillyselfcatering.com