



The Farmhouse

Old Town, St. Mary's

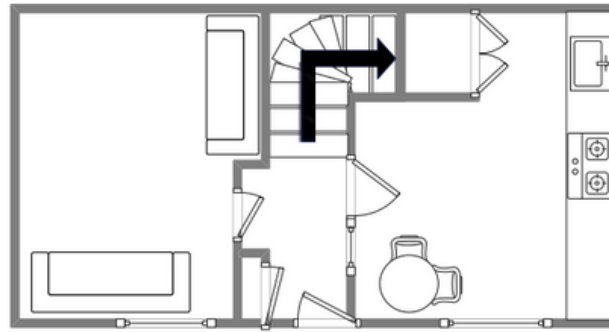
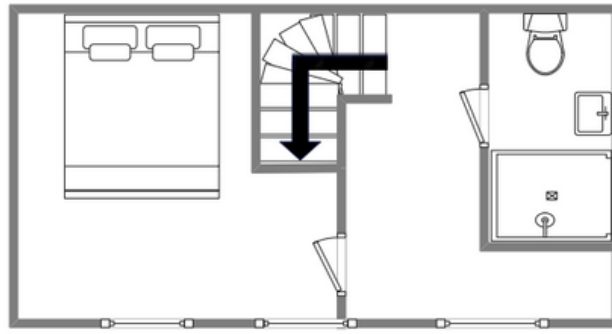


Sleeps 2 | Friday Change over

- Double or twin arrangements
- Private Garden
- Outdoor seating
- Close to beach
- Internet access
- 20 minutes from Hugh town

This old Scillonian farm house is situated just 20 metres from the picturesque Old Town bay with its beautiful beach and historic church. The cottage has recently been refurbished throughout and cleverly retains the the charm of a traditional cottage and blends it with the convenience of modern facilities. The accommodation consists of a comfortable sitting room and a separate dining kitchen on the ground floor, while upstairs is a bedroom that can be made into a double or twin arrangement, and a modern shower room. Guests also have exclusive use of the front garden, with table and chairs provided, making it a perfect place to enjoy the afternoon and evening sunshine.

Layout



Getting to the property

Map of St Marys



Directions from the Quay | Walking time: 20-30 minutes

Head towards the entrance to the quay
Turn left at The Mermaid Inn on to Hugh Street
Keep to the left side of the road
Continue along Hugh Street to Bordeaux shop
When you pass Bordeaux, cross to the Town Hall

Walk straight ahead on to Church Street
Keep to the right side of the road
Follow the road past the church into Old Town
Go past Old Town Bay
The Farmhouse is on your right

What3words:unsettled.mixer.scariest

Scilly Self Catering
Lower Strand
Isles of Scilly, TR21 0PS

Enquiries@scillyselfcatering.com
01720 422082
www.scillyselfcatering.com