



## Seaview moorings – Starboard suite

The Strand, St.Mary's



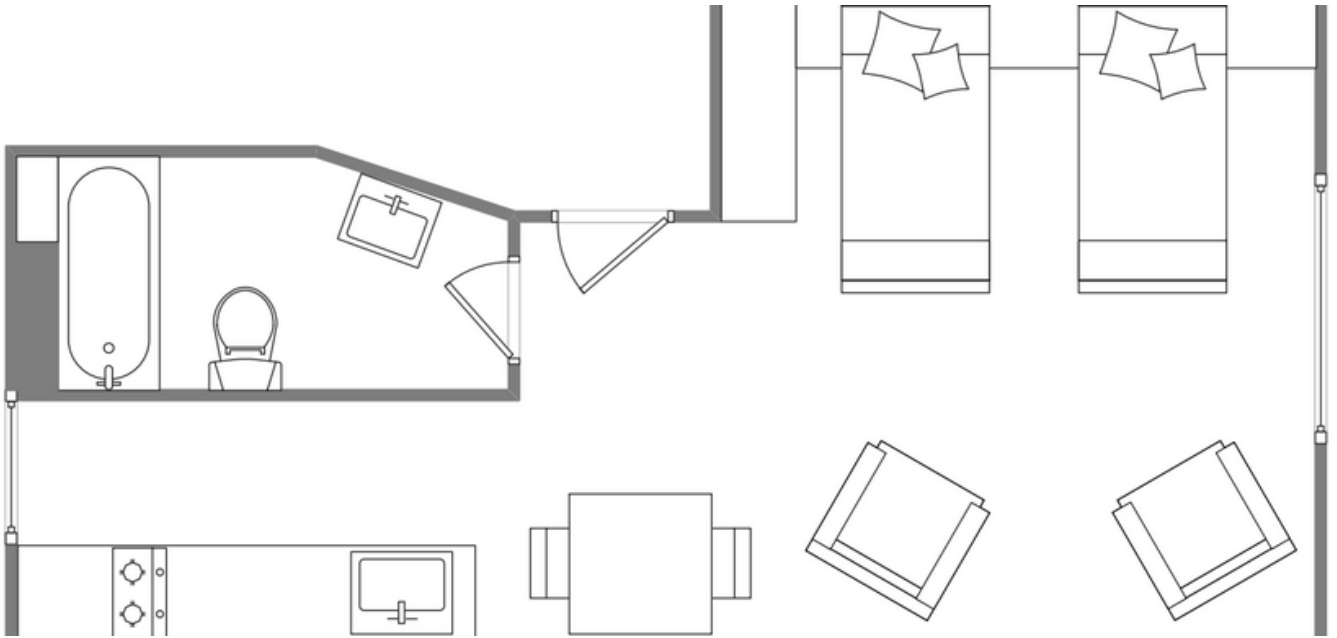
### Sleeps 2 | Thursday Change over

- Twin arrangement
- Outstanding sea view
- Well appointed
- Close to beaches
- Internet access
- Central town location

The Starboard Suite is a first floor studio apartment and is perfectly situated, fronting Town Beach and boasting spectacular uninterrupted views across the harbour to Tresco, Bryher and Samson. It is also less than a five-minute walk to Hugh Town. The Starboard Suite has a bed-sitting area with high quality easy operational pull down twin beds, giving the benefit of additional living space during the day. There is also a Television, DVD player, Wi-Fi and access to Netflix.

Leading off the bed-sitting area is a galley kitchen - fully fitted to a high specification and comprising a fridge, freezer, oven, two ring hob and microwave. The bathroom has a full size bath with electric shower over and there is also a communal laundry room with washing machine and tumble dryer available on site.

# Layout



## Getting to the property

### Map of St Marys



Directions from the Quay | Walking time: 7-9 minutes

Head towards the entrance to the quay  
 Turn left at The Mermaid Inn on to Hugh Street  
 Keep to the left side of the road  
 Carry on all the way past Holgates Green

Stop about 40 yards after the boat park  
 Seaview Moorings is on your right  
 Go through the main entrance  
 Starboard Suite is on the first floor

What3words:///coaching.daydreams.riverbank

Scilly Self Catering  
 Lower Strand  
 Isles of Scilly, TR21 0PS

Enquiries@scillyselfcatering.com  
 01720 422082  
 www.scillyselfcatering.com