



# Seaview moorings - Portsuite

The Strand, St.Mary's

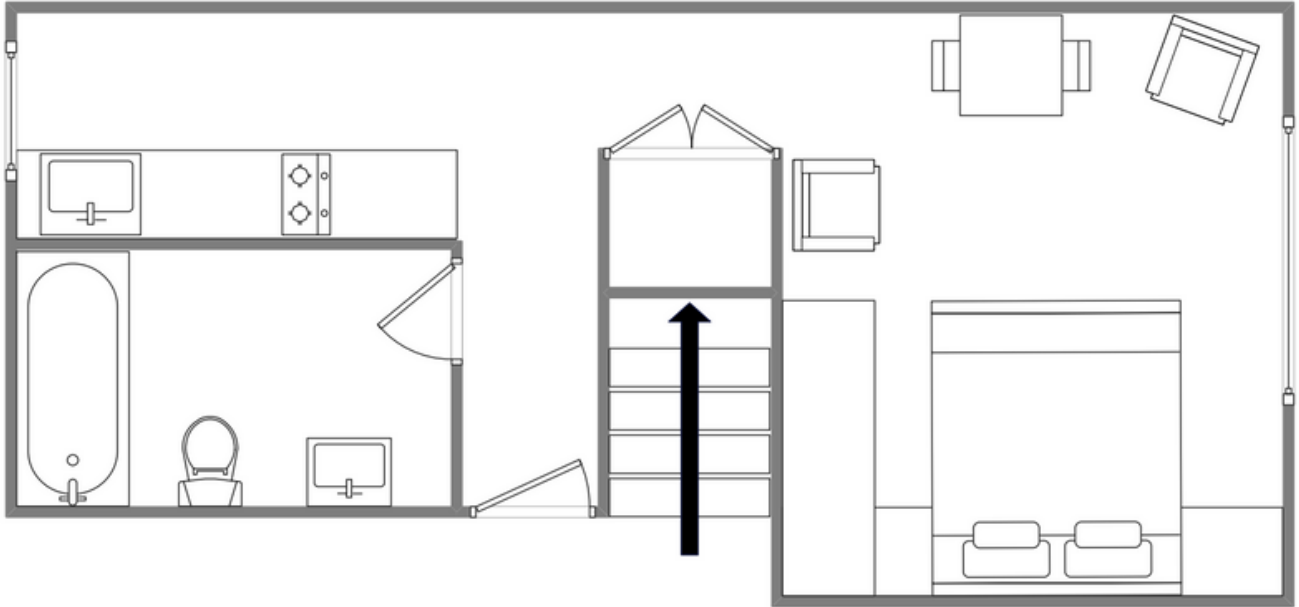


## Sleeps 2 | Thursday Change over

- Double arrangement
- Outstanding sea view
- Laundry Facilities
- Close to beaches
- Internet access
- Central town location

The Port Suite is a first floor studio apartment and is perfectly situated, fronting Town Beach and boasting spectacular uninterrupted views across the harbour to the off islands of Tresco, Bryher and Samson. It is also less than a five-minute walk to Hugh Town. The Port Suite has a bed-sitting area with a high quality easy operational pull down double bed, giving the benefit of additional living space during the day. There is also a Television, DVD player, Wi-Fi and access to Netflix. Leading off the bed-sitting area is a galley kitchen - fully fitted to a high specification comprising a fridge, freezer, oven, two ring hob and microwave. The bathroom has a full size bath with electric shower over and there is also a communal laundry room with washing machine and tumble dryer available on site.

# Layout



## Getting to the property

### Map of St Marys



Directions from the Quay | Walking time: 7-9 minutes

Head towards the entrance to the quay  
Turn left at The Mermaid Inn on to Hugh Street Keep to the left side of the road  
Carry on all the way past Holgates Green

Stop about 40 yards after the boat park  
Seaview Moorings is on your right Go through the main entrance The Port Suite is on the first floor

What3words:///coaching.daydreams.riverbank

Scilly Self Catering  
Lower Strand  
Isles of Scilly, TR21 OPS

Enquiries@scillyselfcatering.com  
01720 422082  
www.scillyselfcatering.com