



# Minalto - Apartment 2

Church street, St. Mary's

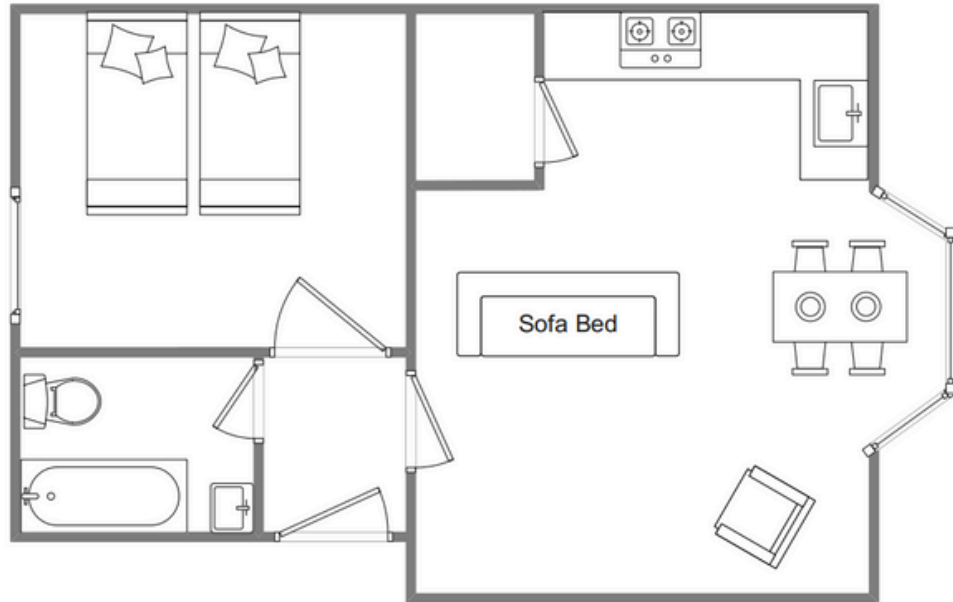


## Sleeps 4 | Friday Change over

- Double or twin arrangements
- Well Appointed
- Laundry Facilities
- Children welcome
- Internet access
- Central town location

This striking three-storey Victorian town house forms part of a granite terrace built from money recovered from the wreck of the SS Schiller, one of the largest ocean liners of her time. Minalto has been converted into four high quality apartments. Apartment 2 is on the ground floor and sleeps two guests in one twin bedroom while two further guests can be accommodated on the sofa bed in the open-plan lounge and dining kitchen area. A modern bathroom with shower over the bath and heated towel rail completes the internal layout where attention to detail and high quality furnishings are obvious throughout. There are also shared laundry facilities on site. Situated a mere five-minute level walk from the heart of Hugh Town, Minalto is also convenient for local beaches and the quay.

# Layout



## Getting to the property

### Map of St Marys



### Directions from the Quay | Walking time: 5-6 minutes

Head towards the entrance to the quay  
Turn left at The Mermaid Inn on to Hugh Street  
Keep to the left side of the road  
Continue along Hugh Street to Bordeaux shop

Cross the road to the Town Hall Walk  
straight ahead on to Church Street Minalto is  
about 100 yards on the right Apartment 2  
entrance is on the ground floor

What3words:creamed.lamppost.unclaimed

Scilly Self Catering  
Lower Strand  
Isles of Scilly, TR21 0PS

Enquiries@scillyselfcatering.com  
01720 422082  
www.scillyselfcatering.com