



# Harbour view, Flat3

Thorofare, St.Mary's

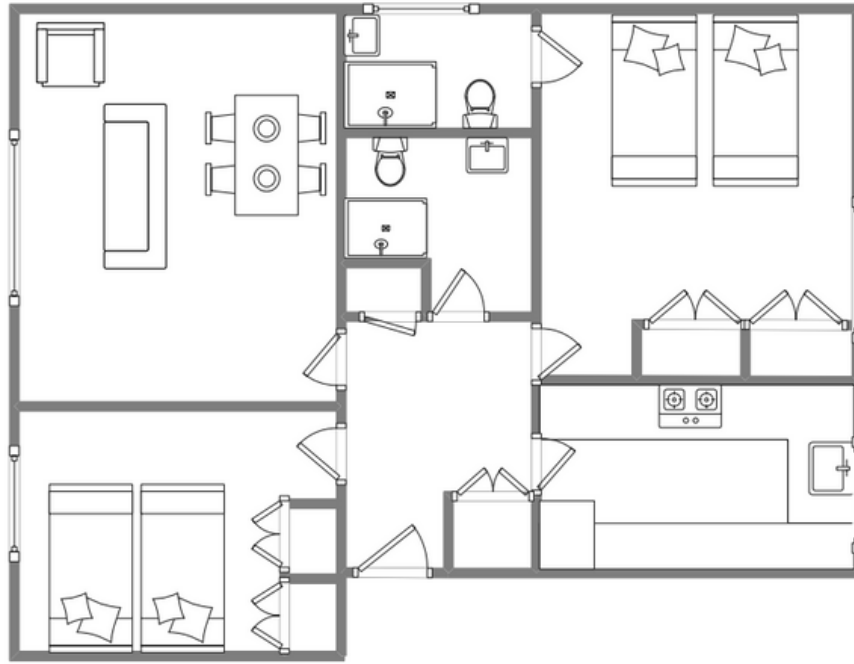


## Sleeps 4 | Friday Change over

- Double or twin arrangements
- Outstanding sea views
- Laundry Facilities
- Dishwasher
- Internet access
- Children welcome

Harbour View is situated, quite literally, on Town Beach and this first floor apartment commands spectacular views over the harbour towards Tresco and St Martin's. The immaculately presented accommodation sleeps four in two double or twin bedrooms, whichever configuration is required, and one bedroom has en suite facilities. The lounge enjoys panoramic sea views and benefits from an abundance of natural light through an attractive bay window arrangement. The fitted kitchen includes a fridge/ freezer dishwasher and microwave. There is also a washing machine and drier available. Harbour View is also conveniently located in a quiet street in the centre of Hugh Town so all local amenities are within easy reach

# Layout



## Getting to the property

### Map of St Marys



Directions from the Quay | Walking time: 5-7 minutes

Head towards the entrance to the quay  
Turn left at The Mermaid Inn Proceed  
along Hugh Street Turn left at the IOS  
Steamship Co office

At the end of the lane turn right into  
Thorofare Continue until the road bends to  
the right Harbour View Flats are on the left  
Flat 3 is on the first floor

What3words:unable.gong.defensive

Scilly Self Catering  
Lower Strand  
Isles of Scilly, TR21 0PS

Enquiries@scillyselfcatering.com  
01720 422082  
www.scillyselfcatering.com