



Avona

Spanish Ledge, The parade, St Marys

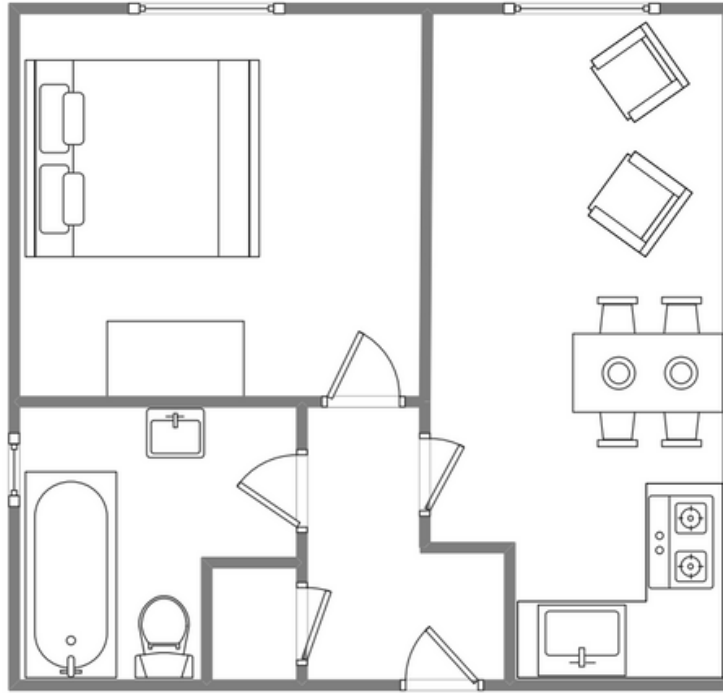


Sleeps 2 | Saturday Change over

- Double arrangement
- Close to beach
- Ideal for solo traveller or a couple
- Short walk to quay
- Internet access
- Central town location

Spanish Ledge is one of the oldest and most striking buildings in Hugh Town. Several years ago this attractive townhouse was converted into holiday apartments which remain popular with regular visitors. Avona is on the second floor and sleeps two in a double bedroom. The remaining layout comprises an open-plan lounge/diner with a modern and well-equipped kitchenette, and a bathroom. Situated just off the main street in the heart of Hugh Town, Avona is within easy reach of all local shops, pubs and restaurants. The quay is only a five-minute walk away and the popular Porthcressa Beach is almost on the doorstep.

Layout



Getting to the property

Map of St Marys



Directions from the Quay | Walking time: 5-7 minutes

Head towards the entrance to the quay
Turn left at The Mermaid Inn on to Hugh Street
Keep to the right side of the road
Pass the Bishop & Wolf pub on to Silver Street

Spanish Ledge is about 50 yards on the left
Enter the rear entrance via the double gates
Head up the wooden staircase
All Spanish Ledge Flats are signposted

What3words:digits.sunbeam.shoppers

Scilly Self Catering
Lower Strand
Isles of Scilly, TR21 0PS

Enquiries@scillyselfcatering.com
01720 422082
www.scillyselfcatering.com