



# Attes

Spanish Ledge, The Parade, St Marys

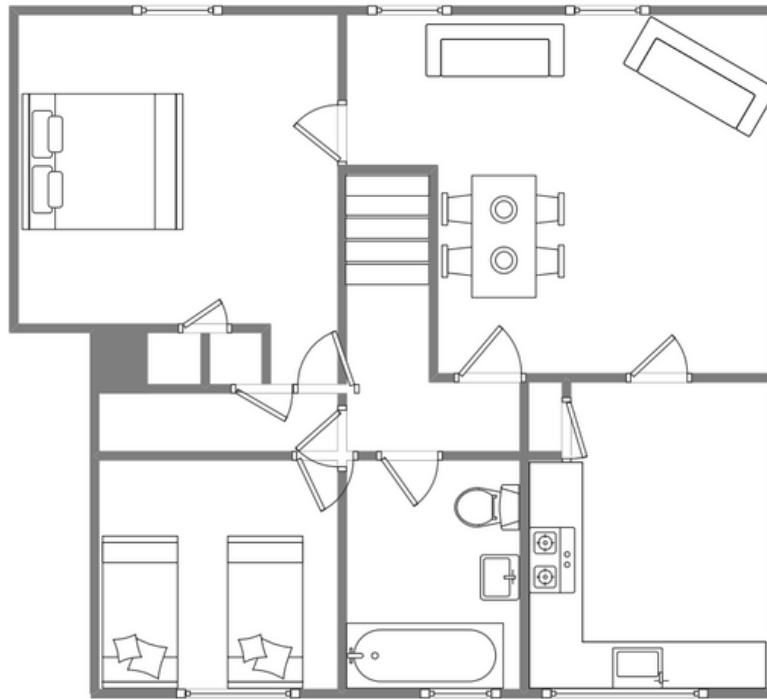


## Sleeps 4 | Friday Change over

- Double or twin arrangements
- Dishwasher
- Laundry Facilities
- Children Welcome
- Internet access
- Central town location

Attes has recently undergone comprehensive refurbishment. It is located on the second floor of Spanish Ledge, one of the most striking buildings in Hugh Town. The apartment accommodates four guests in one twin bedroom and one double bedroom. The remaining internal layout comprises a lounge/dining room, a kitchen looking out towards Porthcressa and a bathroom - all fitted to a high standard. Spanish Ledge is within easy reach of shops, pubs and restaurants. The quay is only a five-minute walk away and the popular Porthcressa Beach is almost on the doorstep. This popular holiday home is equally suited to couples sharing or families seeking a base at the hub of island activities.

# Layout



## Getting to the property

### Map of St Marys



Directions from the Quay | Walking time: 5 minutes

Head towards the entrance to the quay  
 Turn left at The Mermaid Inn on to Hugh Street  
 Keep to the right side of the road Pass the Bishop & Wolf pub on to Silver Street

Spanish Ledge is about 50 yards on the left  
 Enter the rear entrance via the double gates  
 Head up the wooden staircase All Spanish Ledge flats are signposted

What3words: digits.sunbeam.shoppers

Scilly Self Catering  
 Lower Strand  
 Isles of Scilly, TR21 0PS

Enquiries@scillyselfcatering.com  
 01720 422082  
 www.scillyselfcatering.com