

## SUNNY CREEK

Garrison Lane, St Mary's

Sleeps 4 | March - October | Thursday changeover |

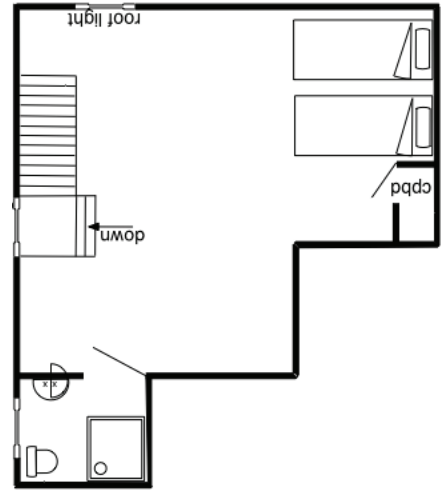
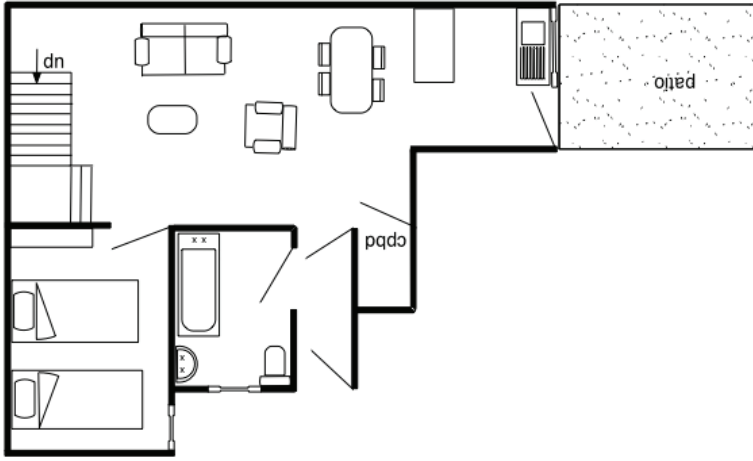


Sunny Creek is tucked away in a quiet spot just off the main street in the centre of Hugh Town and offers ideal accommodation for a family or friends sharing.

The house sleeps up to four guests in twin bedrooms, each with their own bathroom or shower. There is also a large open-plan kitchen lounge and dining room and the further benefit of a small south facing patio to the rear with tables and chairs.

Sunny Creek offers easy access to the heart of Hugh Town so is suitable for people of all ages. The quay is just a short walk away and for those who love walking, a five-minute stroll takes you to the historic Garrison for one of the most panoramic walks on St Mary's and a favourite spot for sunset seekers.

## Layout



- Sleeps 4
- Double and twin arrangement
- Town centre location
- Private courtyard
- Outdoor seating
- Children welcome

## Directions from the Quay Walking time: 6 - 8 minutes

Head towards the entrance to the quay  
 Turn left at The Mermaid Inn  
 When you reach the square, head right  
 Proceed along Jerusalem Terrace

Follow the road to the left on to Garrison Lane  
 Stop when you reach the Police Station  
 You will see a private entrance leading to a path  
 Sunny Creek is at the end of the path

