

SEAVIEW MOORINGS, TOPSAIL SUITE The Strand, St Mary's

Sleeps 2 | March - October | Friday changeover |

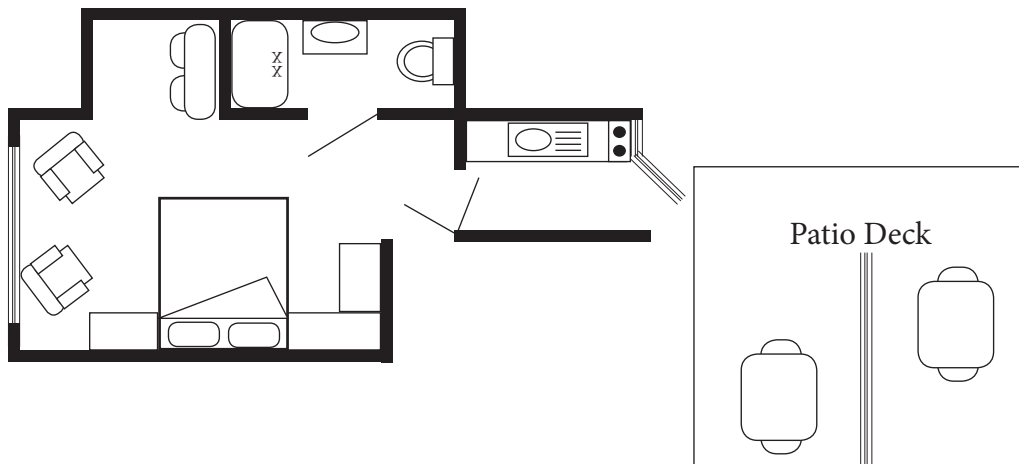


The Topsail Suite is a second floor studio apartment and is perfectly situated, fronting Town Beach and boasting spectacular uninterrupted views across the harbour to Tresco, Bryher and Samson. It is also less than a five-minute walk to Hugh Town and has the additional benefit of a south facing balcony deck with sun lounges, table and chairs.

The Topsail Suite has a bed-sitting area with a high quality easy operational pull down double bed, giving the benefit of additional living space during the day. There is also a Television, DVD player, Wi-Fi and access to Netflix.

Leading off the bed-sitting area is a galley kitchen - fully fitted to a high specification and comprising a fridge, freezer, oven, two ring hob and microwave. A door from the kitchen leads outside onto the balcony deck.

Layout



- Sleeps 2
- Double arrangement
- Outstanding sea views
- Well-appointed
- Internet access
- Netflix
- Close to beaches
- Town location

Directions from the Quay Walking time: 7 - 9 minutes

Head towards the entrance to the quay
 Turn left at The Mermaid Inn on to Hugh Street
 Keep to the left side of the road
 Carry on all the way past Holgates Green

Stop about 40 yards after the boat park
 Seaview Moorings is on your right
 Go through the main entrance
 The Royal Suite is on the second floor

