

## SEAVIEW MOORINGS, THE SUN DECK The Strand, St Mary's

Sleeps 2 | March - October | Wednesday changeover |

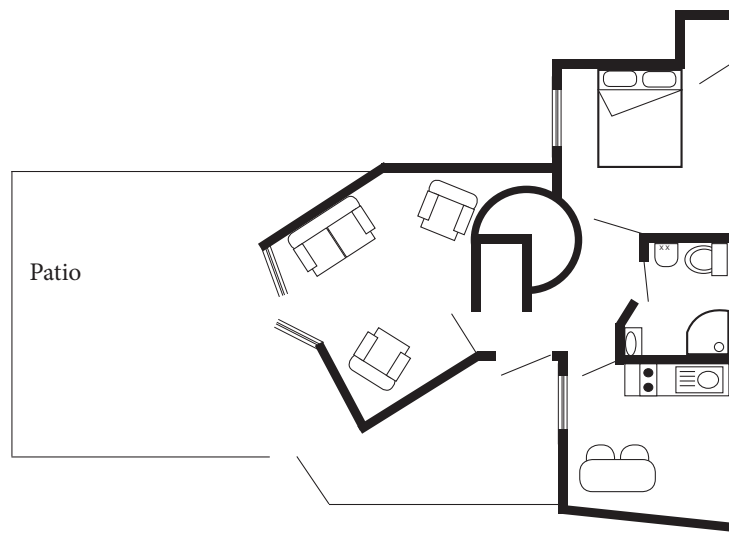


This recently converted apartment is tucked away off Back Lane, behind The Strand, and accommodates two people.

Linked with Seaview Moorings Suites, The Sundeck has the same high specification kitchen and living accommodation as the other suites with similar attention to detail and overall quality.

The Sun Deck has a fully fitted kitchen/diner with fridge, separate freezer, oven, two ring ceramic hob and microwave. The living room has a TV/DVD ,Wi-Fi and access to Netflix. There is also a patio door which leads onto a South facing roof terrace with patio furniture and sun lounges and harbour views.

## Layout



- Sleeps 2
- Double arrangement
- Outstanding sea views
- Well-appointed
- Internet access
- Netflix
- Close to beaches
- Town location

### Directions from the Quay Walking time: 7 - 9 minutes

Head towards the entrance to the quay  
 Turn left at The Mermaid Inn on to Hugh Street  
 Keep to the left side of the road  
 Carry on all the way past Holgates Green  
 Stop about 40 yards after the boat park

Seaview Moorings is on your right  
 Go through the alley to the right of the premises  
 At the end of the alley turn right  
 Take the alleyway that is first left  
 The Sun Deck is on the corner of the path

