

SEAVIEW MOORINGS PORT SUITE

The Strand, St Mary's

Sleeps 2 | March - October | Thursday changeover |

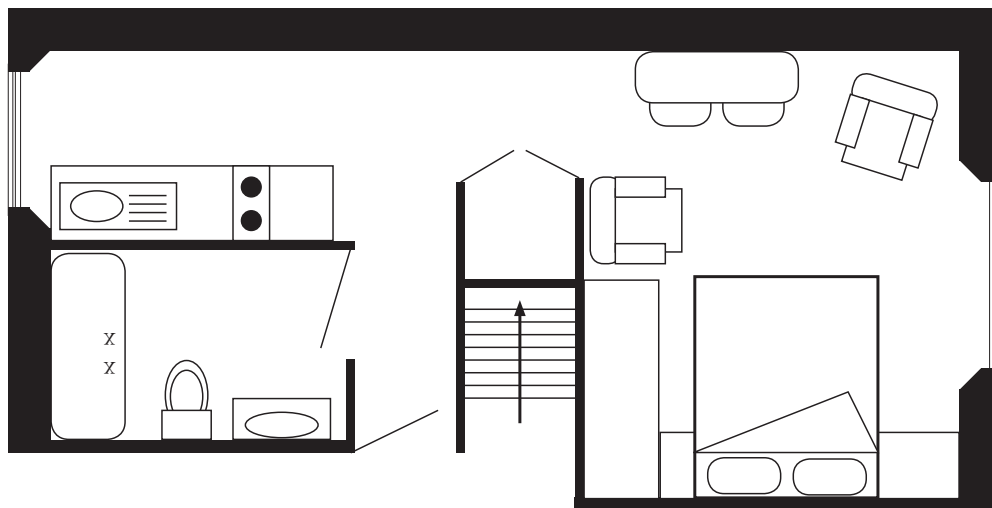


The Port Suite is a first floor studio apartment and is perfectly situated, fronting Town Beach and boasting spectacular uninterrupted views across the harbour to the off islands of Tresco, Bryher and Samson. It is also less than a five-minute walk to Hugh Town.

The Port Suite has a bed-sitting area with a high quality easy operational pull down double bed, giving the benefit of additional living space during the day. There is also a Television, DVD player, Wi-Fi and access to Netflix.

Leading off the bed-sitting area is a galley kitchen - fully fitted to a high specification comprising a fridge, freezer, oven, two ring hob and microwave. The bathroom has a full size bath with electric shower over and there is also a communal laundry room with washing machine and tumble dryer available on site.

Layout



- Sleeps 2
- Double arrangement
- Outstanding sea views
- Well-appointed
- Internet access
- Netflix
- Close to beaches
- Town location

Directions from the Quay Walking time: 7 - 9 minutes

Head towards the entrance to the quay
 Turn left at The Mermaid Inn on to Hugh Street
 Keep to the left side of the road
 Carry on all the way past Holgates Green

Stop about 40 yards after the boat park
 Seaview Moorings is on your right
 Go through the main entrance
 The Port Suite is on the first floor

