

## NORWETHAL FLAT

### Rams Valley, St Mary's

Sleeps 2 | March - October | Thursday changeover | £485 - £635 per week



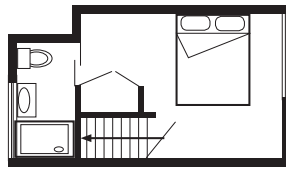
This delightful and beautifully presented holiday home is situated in a quiet cul-de-sac close to the heart of Hugh Town and a five-minute walk from Porthcressa Beach.

The accommodation's open plan layout comprises a comfortable lounge complete with flat screen TV and DVD player, dining area which can comfortably seat four people and well equipped kitchen, stairs lead up to a carpeted double bedroom with shower room,

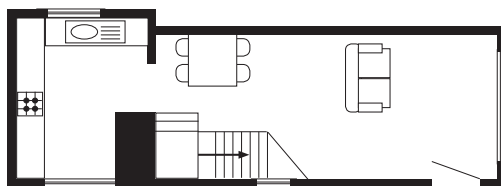
The heart of Hugh Town and the quay are less than a ten-minute walk away while a fifteen-minute stroll in the opposite direction will take you into Old Town.

Norwethal is also very close to the coastal path, which makes it a convenient base for exploring and enjoying the very best the islands have to offer.

## Layout



First Floor



Ground Floor

- Sleeps 2
- Double arrangement
- Well appointed throughout
- Internet access
- Close to town
- Convenient for beaches

### Directions from the Quay Walking time: 8 - 10 minutes

Head towards the entrance to the quay  
Turn left at The Mermaid Inn on to Hugh Street  
Continue along Hugh Street to Bordeaux shop  
Cross the road to the Town Hall

Walk straight ahead on to Church Street  
Turn right at Foredeck Saleroom  
Take first left into Rams Valley  
Norwethal Flat is about 50 yards on the right

