

MINALTO, APARTMENT 4 Church Street, St Mary's

Sleeps 2 | March - October | Friday changeover | £420 - £690 per week

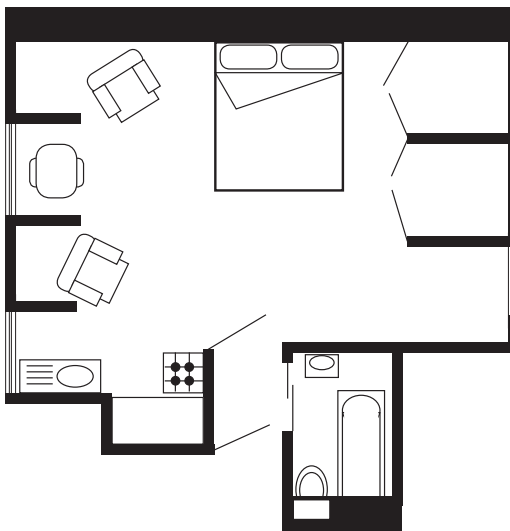


This striking three-storey Victorian town house forms part of a granite terrace built from money recovered from the wreck of the SS Schiller, one of the largest ocean liners of her time. Minalto has been converted into four high quality apartments.

This second floor studio apartment benefits from views to the harbour from the front and the Garrison to the rear and comfortably sleeps two in a double bed in the large dual aspect living area. The apartment also contains a well-equipped kitchenette and a modern bathroom with shower over the bath and heated towel rail.

Situated a mere five-minute level walk from the heart of Hugh Town, Minalto is also convenient for local beaches and the quay.

Layout



- Sleeps 2
- Double arrangement
- Well-appointed throughout
- Bath and shower
- Laundry facilities
- Internet access
- Close to town centre
- Convenient for beaches

Directions from the Quay Walking time: 6 - 10 minutes

Head towards the entrance to the quay
 Turn left at The Mermaid Inn on to Hugh Street
 Keep to the left side of the road
 Continue along Hugh Street to Bordeaux shop

Cross the road to the Town Hall
 Walk straight ahead on to Church Street
 Minalto is about 100 yards on the right
 Apartment 4 entrance is on the second floor



Lower Strand
 St Mary's
 Isles of Scilly TR21 0PS

enquiries@scillyselfcatering.com
 01720 422082
 www.scillyselfcatering.com