

HARBOUR VIEW, FLAT 3 Thorofare, St Mary's

Sleeps 4 | Mar - October | Friday changeover | £500 - £1,330 per week



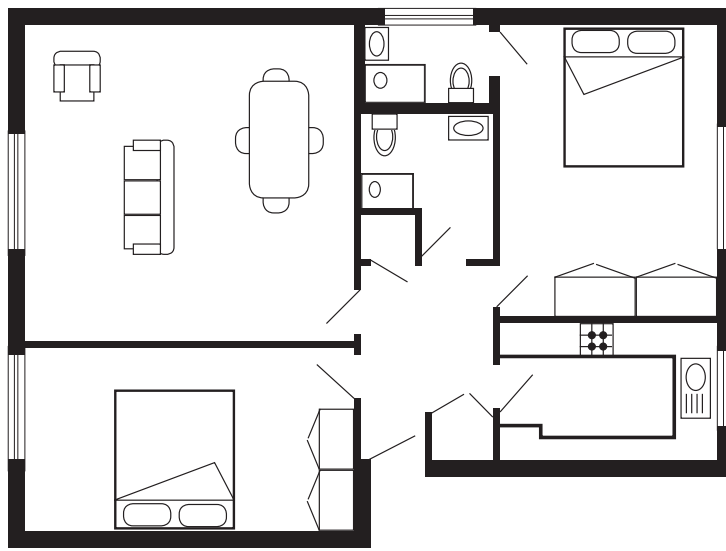
Harbour View is situated, quite literally, on Town Beach and this first floor apartment commands spectacular views over the harbour towards Treco and St Martin's.

The immaculately presented accommodation sleeps four in two double or twin bedrooms, whichever configuration is required, and one bedroom has en suite facilities.

The lounge enjoys panoramic sea views and benefits from an abundance of natural light through an attractive bay window arrangement. The fitted kitchen includes a fridge/freezer dishwasher and microwave. There is also a washing machine and drier available.

Harbour View is also conveniently located in a quiet street in the centre of Hugh Town so all local amenities are within easy reach.

Layout



- Sleeps 4
- Double or twin arrangements
- Outstanding sea views
- Washing Machine
- Dishwasher
- Children welcome
- Internet access
- Situated on the beach

Directions from the Quay Walking time: 5 - 7 minutes

Head towards the entrance to the quay
 Turn left at The Mermaid Inn
 Proceed along Hugh Street
 Turn left at the IOS Steamship Co office

At the end of the lane turn right into Thorofare
 Continue until the road bends to the right
 Harbour View Flats are on the left
 Flat 3 is on the first floor

