

## THE CABIN

### Pentland House, The Bank, St Mary's

Sleeps 2 | March - October | Friday changeover | £315 - £550 per week



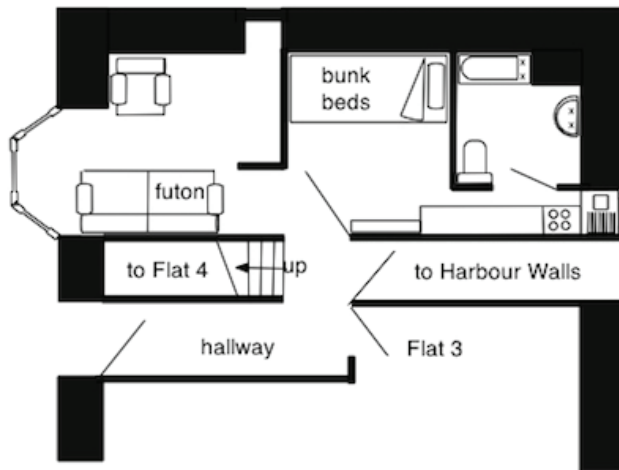
The Cabin is a compact and cleverly designed ground floor bijou residence located in the heart of Hugh Town in Pentland House, next to the historic Mermaid Inn.

Sleeping two guests in bunk beds, the interior is quirky and full of character, making maximum use of the available space.

The layout comprises a cosy lounge with a feature bay window, a bunk bedroom area complete with reading lights for both bunks, a compact kitchen with stunning views of the busy harbour and a shower room.

The Cabin is a popular choice for two friends to share or for the single traveller and their dog. It's position at the hub of Island activities means you really feel a part of island life.

## Layout



- Sleeps 2
- Bunk beds
- Town centre location
- Convenient for beaches
- Internet access
- Pets allowed
- Children welcome
- Ideal for the solo traveller

## Directions from the Quay Walking time: 2 - 3 minutes

Head towards the entrance to the quay  
 Turn left at The Mermaid Inn on to Hugh Street  
 Keep to the left side of the road

Pentland House is the first building  
 Enter the main door to Pentland House  
 The Cabin is situated on the right

