

## **THE CABIN**

### **The Bank, St Mary's**

Sleeps 4 | March - October | Thursday changeover |



★★★★

✓ Wi-Fi

✓ Children aged 6+

X Pets

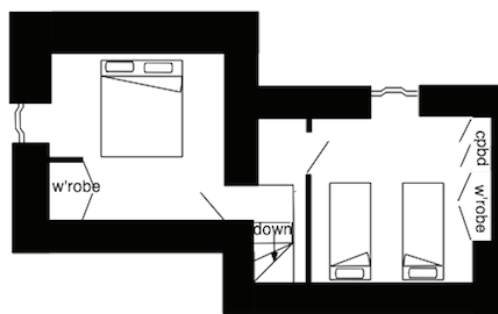
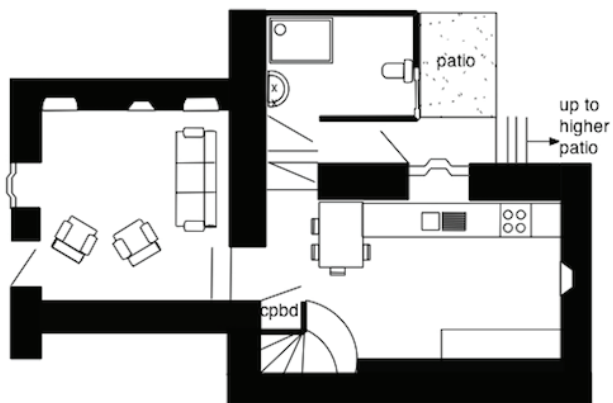
The Cabin is a picturesque traditional Scillonian cottage that oozes charm and character. It was also one of the first cottages built in Hugh Town and is extremely popular with visitors returning to stay there year after year.

One double and one twin room provide sleeping accommodation for up to four guests on the first floor, while the ground floor comprises a cosy lounge leading to a well-appointed and fully equipped breakfast kitchen, and a shower room.

There are also two small sun trap terraces to the rear

The cottage is set in the heart of Hugh Town, on Hugh Street itself, with shops, pubs and restaurants practically on the doorstep, and the quay is also just a few steps away.

## Layout



- Sleeps 4
- Double and twin arrangements
- Laundry facilities
- Town centre location
- Internet access
- Children welcome
- Convenient for quay
- Close to beaches

## Directions from the Quay Walking time: 2 - 3 minutes

Head towards the entrance to the quay  
Turn left at The Mermaid Inn on to Hugh Street  
Carry on to the Atlantic Slipway

You will see a row of traditional cottages  
The Cabin is second from the your right  
Enter from Hugh Street

