

BUCCABU 2

The Strand, St Mary's

Sleeps 2 | Wednesday changeover | £465 - £890 per week



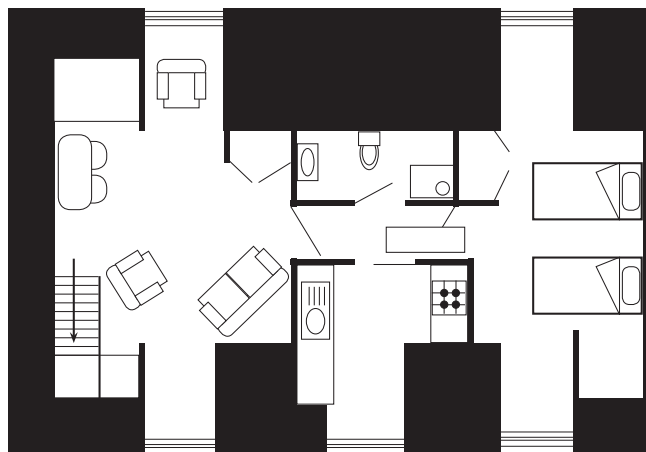
This popular apartment is situated in The Strand, opposite Holgates Green, an attractive open space that overlooks St Mary's Harbour.

The accommodation benefits from an abundance of natural light and offers magnificent views of the harbour and islands beyond from the open-plan lounge/diner and the twin bedroom.

The remaining internal layout comprises a shower room and a cleverly designed galley kitchen that makes maximum use of the space available.

Buccabu 2 is in a sought after location with all the facilities of Hugh Town within easy walking distance and Town Beach is practically on the doorstep.

Layout



- Sleeps 2
- Twin arrangement
- Sea Views
- Internet access
- Children welcome
- Close to town and beaches

Directions from the Quay Walking time: 5 - 7 minutes

Head towards the entrance to the quay
 Turn left at The Mermaid Inn on to Hugh Street
 Keep to the left side of the road
 Carry on all the way to Holgates Green

Stop just before the boat park
 Buccabu 2 is opposite, next to The Fudge Shop
 Take the door to the left of The Fudge Shop
 Head upstairs to the first floor

