



## BEACH MOORINGS

### Smugglers Ride, Thorofare, St Mary's

Sleeps 2 | Saturday changeover |



Beach Moorings has proved to be one of our most popular holiday homes over the years.

As its name suggests, it is situated right on the beach and enjoys a sought after location in the heart of Hugh Town, within a short walk to almost all island amenities.

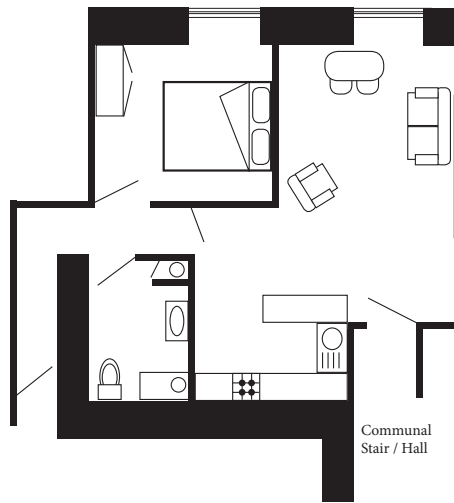
The accommodation has stunning sea views and is well-presented throughout. It offers a fully fitted kitchen, a good size lounge/diner, one double bedroom and a shower room.

The building provides direct access to Town Beach and coin operated laundry facilities are available on site.

Beach Moorings is an ideal base for couples of all ages.

# Layout

Beach Moorings



- Sleeps 2
- Double arrangement
- Sea views
- Laundry facilities
- Internet access
- Children welcome
- Town centre location
- On the beach

## Directions from the Quay Walking time: 5 minutes

Head towards the entrance to the quay  
 Turn left at The Mermaid Inn on to Hugh Street  
 Keep to the left side of the road  
 Go as far as the IOS Steamship Co. office

Turn left into the alley  
 At the bottom of the alley turn right  
 Go past Schooners Hotel  
 The entrance to Beach Moorings is on the left



Lower Strand  
 St Mary's  
 Isles of Scilly TR21 0PS

enquiries@scillyselfcatering.com  
 01720 422082  
 www.scillyselfcatering.com