

## AVONA

### Spanish Ledge, The Parade, St Mary's

Sleeps 2 | Saturday changeover | £415 - £665 per week

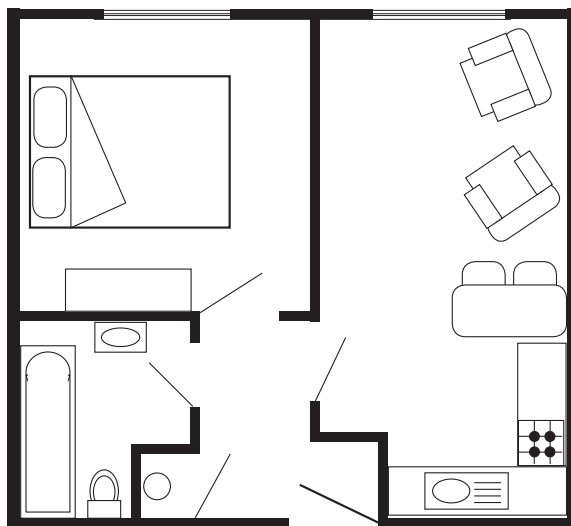


Spanish Ledge is one of the oldest and most striking buildings in Hugh Town. Several years ago this attractive townhouse was converted into holiday apartments which remain popular with regular visitors.

Avona is on the second floor and sleeps two in a double bedroom. The remaining layout comprises an open-plan lounge/diner with a modern and well-equipped kitchenette, and a bathroom.

Situated just off the main street in the heart of Hugh Town, Avona is within easy reach of all local shops, pubs and restaurants. The quay is only a five-minute walk away and the popular Porthcressa Beach is almost on the doorstep.

## Layout



- Sleeps 2
- Double arrangement
- Well-appointed
- Town centre location
- Internet access
- Close to beach
- Short walk to quay
- Ideal for the solo traveller

## Directions from the Quay Walking time: 5 - 7 minutes

Head towards the entrance to the quay  
 Turn left at The Mermaid Inn on to Hugh Street  
 Keep to the right side of the road  
 Pass the Bishop & Wolf pub on to Silver Street

Spanish Ledge is about 50 yards on the left  
 Enter the rear entrance via the double gates  
 Head up the wooden staircase  
 All Spanish Ledge Flats are signposted

