

ATTES

Spanish Ledge, The Parade, St Mary's

Sleeps 4 | Friday changeover |



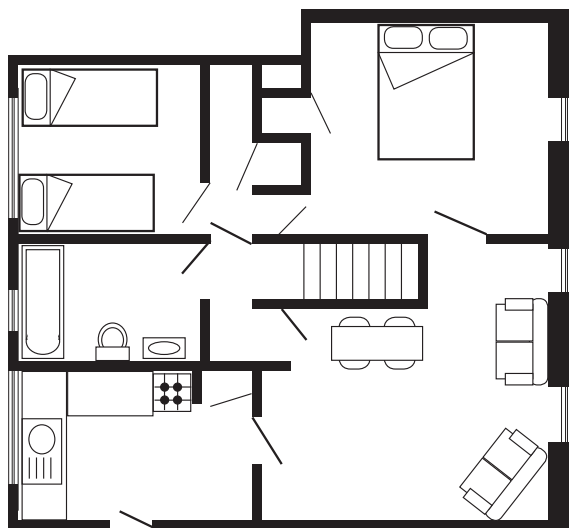
Attes has recently undergone comprehensive refurbishment. It is located on the second floor of Spanish Ledge, one of the most striking buildings in Hugh Town.

The apartment accommodates four guests in one twin bedroom and one double bedroom. The remaining internal layout comprises a lounge/dining room, a kitchen looking out towards Porthcressa and a bathroom - all fitted to a high standard.

Spanish Ledge is within easy reach of shops, pubs and restaurants. The quay is only a five-minute walk away and the popular Porthcressa Beach is almost on the doorstep.

This popular holiday home is equally suited to couples sharing or families seeking a base at the hub of island activities.

Layout



- Sleeps 4
- Double and twin arrangement
- Town centre location
- Laundry facilities
- Dishwasher
- Internet access
- Children welcome
- Convenient for quay and beaches

Directions from the Quay Walking time: 5 minutes

Head towards the entrance to the quay
 Turn left at The Mermaid Inn on to Hugh Street
 Keep to the right side of the road
 Pass the Bishop & Wolf pub on to Silver Street

Spanish Ledge is about 50 yards on the left
 Enter the rear entrance via the double gates
 Head up the wooden staircase
 All Spanish Ledge flats are signposted

