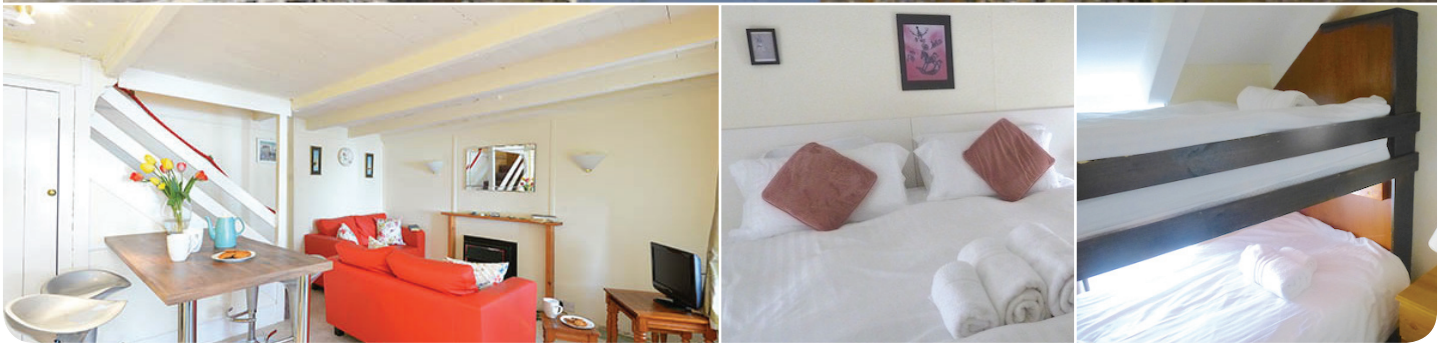


ANCHOR COTTAGE

The Bank, St Mary's

Sleeps 4 | Monday changeover |

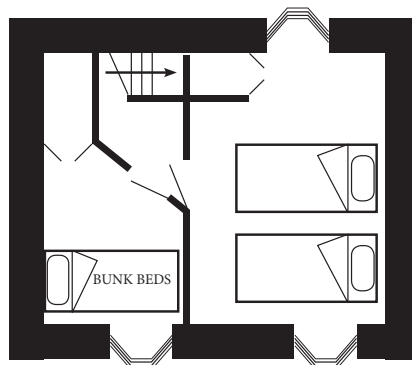
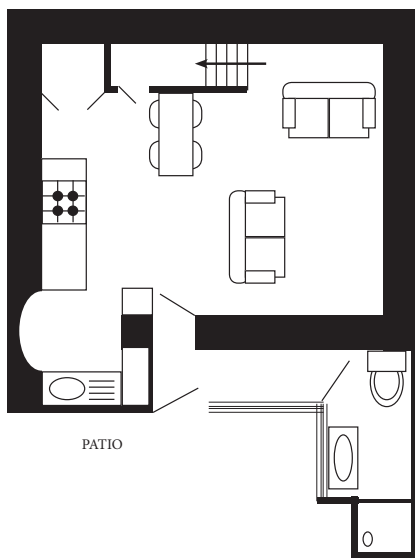


This traditional double-fronted granite cottage possesses a wealth of character and is ideally situated on a quiet pedestrian footpath just off the main street in Hugh Town.

Anchor Cottage sleeps four guests in two upstairs bedrooms, one can be a double or a twin and the other containing bunk beds.

Being part of the oldest group of cottages on St Mary's makes Anchor Cottage a perennial favourite with return visitors. It is conveniently located for shops, pubs and restaurants, the quay is a short walk away for your boating requirements and there are several beaches nearby.

Layout



- Sleeps 4
- Twin or Super King plus bunk beds
- Town centre location

- Patio
- Internet access
- Children welcome

Directions from the Quay Walking time: 5 minutes

Head towards the entrance to the quay
 Turn left at The Mermaid Inn
 Continue along High Street
 Stop at the Atlantic slipway

On the opposite side you will see a narrow lane
 Enter the lane
 Continue for about 10 metres
 Anchor Cottage is on the left

